



MONTHLY MEMBERSHIP PROGRESS REPORT

District 321 F

Results as of: 4/30/2016

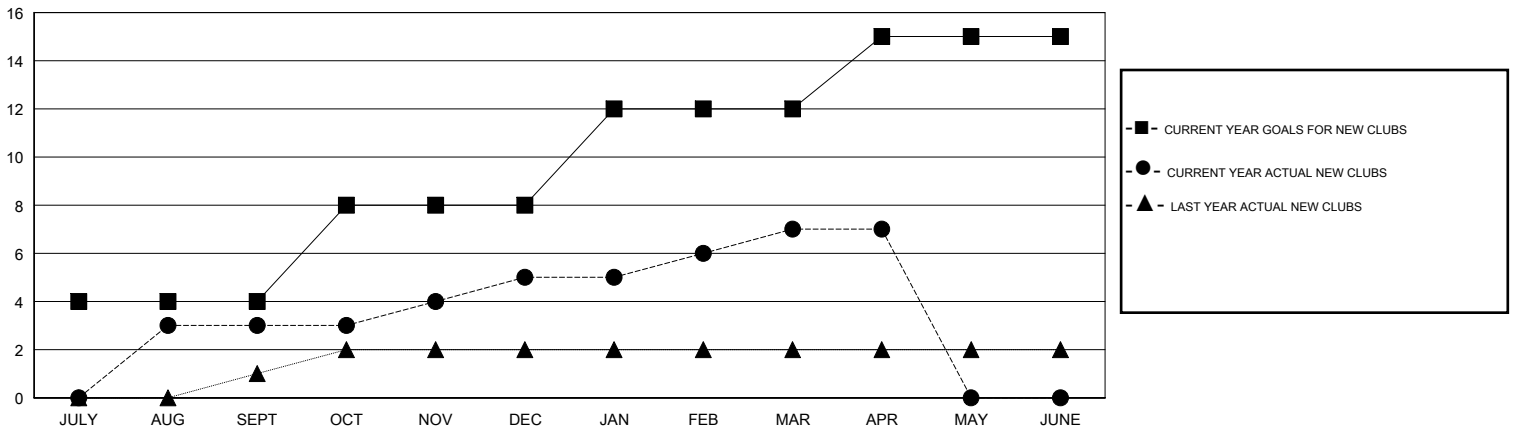
GMT: V S Kukreja

LOCATION INDIA

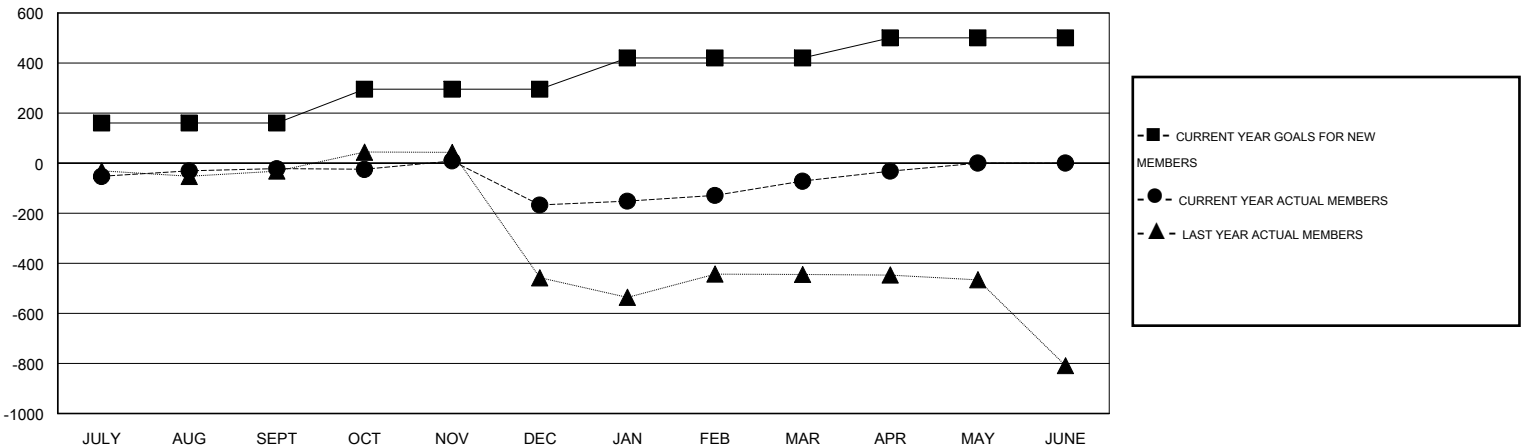
GMT CA 6

| Clubs | | | | | Members | | | | |
|-----------------------|---------------|-----------|---------------|---------------|-----------------------|-----------------|-------------------------------|-----------------|---------------|
| RESULTS FOR 2015-2016 | | | | | RESULTS FOR 2015-2016 | | | | |
| QUARTER | NEW CLUB GOAL | NEW CLUBS | DROPPED CLUBS | NET GAIN/LOSS | QUARTER | NEW MEMBER GOAL | CHARTER AND NEW MEMBERS ADDED | DROPPED MEMBERS | NET GAIN/LOSS |
| JULY/AUG/SEPT | 4 | 3 | 3 | 0 | JULY/AUG/SEPT | 160 | 199 | 221 | -22 |
| OCT/NOV/DEC | 4 | 2 | 9 | -7 | OCT/NOV/DEC | 135 | 100 | 245 | -145 |
| JAN/FEB/MAR | 4 | 2 | 3 | -1 | JAN/FEB/MAR | 125 | 216 | 121 | 95 |
| APR/MAY/JUNE | 3 | 0 | 0 | 0 | APR/MAY/JUNE | 80 | 54 | 14 | 40 |

GOALS AND ACTUAL NEW CLUBS CUMULATIVE



GOALS AND ACTUAL MEMBERS CUMULATIVE



| | | |
|------------------------|---|----------------------------------|
| DROPPED CLUBS: 15 | 74 CLUBS OF 141 ADDED 1 OR MORE NEW MEMBERS | GENDER DISTRIBUTION |
| | | MALE 3,732 (89.43%) |
| | | FEMALE 441 (10.57%) |
| DROPPED MEMBERS | CLICK HERE FOR HEALTH ASSESSMENT DATA | FAMILY UNIT MEMBERS 1,159 |
| DECEASED 6 | | HEAD OF HOUSEHOLD 436 |
| CLUB CANCELLED 242 | | NON-HEAD OF HOUSEHOLD 723 |
| OTHER 352 | | |
| TOTAL 600 | | |